



Australian Notices to Mariners are the authority for correcting Australian Charts and Publications

AUSTRALIAN NOTICES TO MARINERS

Notices 1042 - 1090 

Published fortnightly by the Australian Hydrographic Service

Commodore R. NAIRN RAN
Hydrographer of Australia

SECTIONS.	I.	Australian Notices to Mariners, including blocks and notes.
	II.	Hydrographic Reports.
	III.	Navigational Warnings.
	Annex.	Amendments to Admiralty List of Lights and Fog Signals (Vol K), Radio Signals (NP 281(2), 282, 283(2), 285, 286(4)) and Sailing Directions (NP 9, 13, 14, 15, 33, 34, 35, 36, 39, 44, 51, 60, 61, 62, 100, 136).

[British Admiralty Notices to Mariners](#)

The substance of these notices should be inserted on the charts affected.

Bearings are referred to the true compass and are reckoned clockwise from North; those relating to lights are given as seen by an observer from seaward. Positions quoted in permanent notices relate to the horizontal datum for the chart(s). When preliminary or temporary notices affect multiple charts, positions will be provided in relation to only one horizontal datum and that datum will be specified. When the multiple charts do not have a common horizontal datum, mariners will be required to adjust the position(s) for those charts not on the specified datum. The range quoted for a light is its nominal range. Depths are with reference to the chart datum of each chart. Heights are above mean high water springs or mean higher high water, as appropriate.

The capital letter (P) or (T) after the number of any notice denotes a preliminary or temporary notice respectively, which are contained separately at the end of the permanent notices. A star () adjacent to the number of a notice indicates that the notice is based on original information.*

Mariners are particularly requested to notify the AUSTRALIAN HYDROGRAPHIC SERVICE, Locked Bag 8801 Wollongong, NSW 2500 (Fax 02-4223 6599, e-mail Hydro.NTM@defence.gov.au or, alternatively by filling in and submitting the [Hydrographic Notes](#) forms located on the web site – www.hydro.gov.au), immediately on the discovery of new dangers or suspected dangers to navigation. For changes or defects in aids to navigation notify AusSAR (Fax 02-6230 6868 or email rccaus@amsa.gov.au).

Copies of Australian notices are available free of charge from the Australian Hydrographic Service (AHS) website (www.hydro.gov.au) and through the eNotices (email) service (www.hydro.gov.au/enotices/enotices.htm).

Individual Notices may be copied for the purpose of inserting Notice substance on official charts and publications. Paper copies may be printed by chart agents and distributed to customers on a cost recovery basis. Participating chart agents are listed on the AHS website as providing a 'Paper Notices to Mariners' service (www.hydro.gov.au/prodserv/distributors/distributors.htm). Copies of the notices may not be sold for profit without prior written agreement.

IMPORTANT NOTICE

This edition of Notices to Mariners includes all significant information affecting AHS products which the AHS has become aware of since the last edition. All reasonable efforts have been made to ensure the accuracy and completeness of the information, including third party information, on which these updates are based. The AHS regards third parties from which it receives information as reliable, however the AHS cannot verify all such information and errors may therefore exist. The AHS does not accept liability for errors in third party information.

© Commonwealth of Australia 2009

This work is copyright. Apart from any use permitted under the Copyright Act 1968, no part may be reproduced by any process, adapted, communicated or commercially exploited without prior written permission from The Commonwealth represented by the Australian Hydrographic Service.

NUMERICAL INDEX OF NOTICES TO MARINERS

Edition No 18

Notices	Aus Chart, INT Chart, ENC Cell, AHP
1042.....	Aus 51, AU437139
1043.....	Amendment to Australian Notice to Mariners No 2
1044.....	Amendment to Australian National Tide Tables 2009
1045.....	Aus 221, 424, 812
1046.....	Aus 230
1047.....	Aus 245, 246
1048.....	Aus 247, 265, 819
1049.....	Aus 4060, 4602, INT 60, 602
1050.....	Aus 512
1051.....	Aus 303
1052.....	Aus 4721, AX 4721F, INT 721
1053.....	Aus 4722, INT 722
1054.....	Aus 55
1055.....	Aus 56
1056.....	Aus 81
1057.....	Aus 757
1058.....	Aus 759
1059.....	Aus 178
1060.....	Aus 173
1061.....	Aus 169, 171
1062.....	Aus 766, 797
1063.....	Aus 163, 164
1064.....	Aus 143
1065.....	Aus 143, 157
1066.....	Aus 181
1067.....	Aus 182
1068(T).....	Aus 193, 807, 808, AX 0808E, 60193, 70193, AU436150, 5XX193
1069(T).....	Aus 194, AU5XX194
1070(T).....	Aus 207, 208, AU5XX208
1071(T).....	Aus 236
1072(T).....	Aus 236, 237, AU5237X8
1073(T).....	Aus 247, 265, 819, AU424150
1074(T).....	Aus 260, 367, 822, AX 0260E, 0367E, 0822E, 60260, AU423150
1075(T).....	Aus 262, 263, 264, 830, AX 6027S, 63262, AU417145, 5262X4
1076(T).....	Aus 263, 264, AU5262X4
1077(T).....	Aus 270, AU5270P6
1078(T).....	Aus 26, 28, 722, AX 72026, 72722, AU5XXX24, 413130
1079(T).....	Aus 50, 51, 324, AU418122
1080(T).....	Aus 52, 54, AU5XXX52
1081(T).....	Aus 57, 58, 59, AU5XXX58
1082(T).....	Aus 342, 343, 345, 346, 444, AX 0343E, AU336135
1083(T).....	Aus 177, 792
1084(T).....	Aus 171, 173
1085(T).....	Aus 167, 799, AU442146, 5167X8
1086(T).....	Aus 167, 168, AU5167X8
1087(P).....	Aus 143, 144, 349, 788, AU439144
1088(T).....	Aus 155, AU5155P1
1089(T).....	Aus 154, 155, AU438144, 5XX154
1090(T).....	Aus 143, 155, AU438144

NUMERICAL INDEX OF CHARTS AFFECTED

Edition No 18

Aus Chart	Notices	Aus Chart	Notices
Aus 26.....	1078(T)	Aus 766	1062
Aus 28.....	1078(T)	Aus 788	1087(P)
Aus 50.....	1079(T)	Aus 792	1083(T)
Aus 51.....	1042, 1079(T)	Aus 797	1062
Aus 52.....	1080(T)	Aus 799	1085(T)
Aus 54.....	1080(T)	Aus 807	1068(T)
Aus 55.....	1054	Aus 808	1068(T)
Aus 56.....	1055	Aus 812	1045
Aus 57.....	1081(T)	Aus 819	1048, 1073(T)
Aus 58.....	1081(T)	Aus 822	1074(T)
Aus 59.....	1081(T)	Aus 830	1075(T)
Aus 81.....	1056	Aus 4060	1049
Aus 143.....	1064, 1065, 1087(P), 1090(T)	Aus 4602	1049
Aus 144.....	1087(P)	Aus 4721	1052
Aus 154.....	1089(T)	Aus 4722	1053
Aus 155.....	1088(T), 1089(T), 1090(T)	AX 0260E	1074(T)
Aus 157.....	1065	AX 0343E	1082(T)
Aus 163.....	1063	AX 0367E	1074(T)
Aus 164.....	1063	AX 0808E	1068(T)
Aus 167.....	1085(T), 1086(T)	AX 0822E	1074(T)
Aus 168.....	1086(T)	AX 4721F	1052
Aus 169.....	1061	AX 60193	1068(T)
Aus 171.....	1061, 1084(T)	AX 60260	1074(T)
Aus 173.....	1060, 1084(T)	AX 6027S	1075(T)
Aus 177.....	1083(T)	AX 63262	1075(T)
Aus 178.....	1059	AX 70193	1068(T)
Aus 181.....	1066	AX 72026	1078(T)
Aus 182.....	1067	AX 72722	1078(T)
Aus 193.....	1068(T)		
Aus 194.....	1069(T)	INT Chart	Notices
Aus 207.....	1070(T)	INT 60.....	1049
Aus 208.....	1070(T)	INT 602.....	1049
Aus 221.....	1045	INT 721.....	1052
Aus 230.....	1046	INT 722.....	1053
Aus 236.....	1071(T), 1072(T)		
Aus 237.....	1072(T)	ENC Cell	Notices
Aus 245.....	1047	AU336135.....	1082(T)
Aus 246.....	1047	AU413130.....	1078(T)
Aus 247.....	1048, 1073(T)	AU417145.....	1075(T)
Aus 260.....	1074(T)	AU418122.....	1079(T)
Aus 262.....	1075(T)	AU423150.....	1074(T)
Aus 263.....	1075(T), 1076(T)	AU424150.....	1073(T)
Aus 264.....	1075(T), 1076(T)	AU436150.....	1068(T)
Aus 265.....	1048, 1073(T)	AU438144.....	1089(T), 1090(T)
Aus 270.....	1077(T)	AU437139.....	1042
Aus 303.....	1051	AU439144.....	1087(P)
Aus 324.....	1079(T)	AU442146.....	1085(T)
Aus 342.....	1082(T)	AU5XXX24	1078(T)
Aus 343.....	1082(T)	AU5XXX52	1080(T)
Aus 345.....	1082(T)	AU5XXX58	1081(T)
Aus 346.....	1082(T)	AU5XX154	1089(T)
Aus 349.....	1087(P)	AU5155P1	1088(T)
Aus 367.....	1074(T)	AU5167X8	1085(T), 1086(T)
Aus 424.....	1045	AU5XX193	1068(T)
Aus 444.....	1082(T)	AU5XX194	1069(T)
Aus 512.....	1050	AU5XX208	1070(T)
Aus 722.....	1078(T)	AU5237X8	1072(T)
Aus 757.....	1057	AU5262X4	1075(T), 1076(T)
Aus 759.....	1058	AU5270P6	1077(T)

1042 AUSTRALIA - Product

Australian Hydrographic Service (AA419687, AA428412)

New Chart

<i>Chart</i>	<i>Published</i>	<i>Title and description of amendments</i>	<i>Scale</i>	<i>Index Chart</i>	<i>Price</i>
Aus 51	31/7/2009	Australia - North West Coast - Western Australia - Port of Broome 17° 59' 06" S - 18° 01' 54" S 122° 10' 30" E - 122° 14' 12" E New chart providing improved coverage of the Port of Broome.	1:10 000	Aus 5000	\$35.00

New Electronic Navigation Chart (Seafarer ENC)

<i>Cell Name</i>	<i>Released</i>	<i>Title</i>
AU437139	September 2009	South Australia - Lacepede Bay

For further details refer to the AHS website at www.hydro.gov.au for new edition and new chart stock arrival information.

When placing orders with a chart agent, mariners should advise whether their order pertains to the current edition or the new edition.

1043 AUSTRALIA - Product - Amendment to Australian Notice to Mariners No 2

Australian Hydrographic Service (AA426647)

Page 11

Amend Cairns Chart Correcting Agency details to read:

Cairns Chart Correcting Agency

Unit E1, C/- The Big Boat Shed
35-37 Tingira Street, 4870

Telephone

+61 (0)7 4035 2100

C, Ntm

Fax

+61 (0)7 4035 2133

Email

info@cairnscharts.com.au

Website

www.cairnscharts.com.au

Page 13

Delete entry for Glascraft Marine Pty Ltd South Australia

1044 AUSTRALIA - Product - Amendment to Australian National Tide Tables 2009

Australian Hydrographic Service (AA426740, AA427868, AA427883)

Page xxix

Insert Broome To Chart Datum AUS 51 NC 31 JUL 2009 0.0

Page 382

Amend JURIEN BAY To Chart Datum to 0.0

Amend PORT DENISON To Chart Datum to 0.0

Page 384

Amend PORT GREGORY To Chart Datum to 0.0

Users of Seafarer Tides 2009 should view www.hydro.gov.au for an update.

1045* AUSTRALIA - NEW SOUTH WALES - South Solitary Island - Obstructions southeastwards

NSW Services, Technology and Administration (AA426335, AA426337, AA426338)

Aus 221 [985/2009]

Insert	depth, 10m, enclosed by danger circle with legend, <i>Obstn</i>	30° 16'.50 S	153° 18'.00 E
	depth, 10m, enclosed by danger circle with legend, <i>Obstn</i>	30° 16'.07 S	153° 23'.80 E

Aus 424 [985/2009]

Insert	depth, 5 ₃ fm, enclosed by danger circle	30° 16'.5 S	153° 18'.0 E
	depth, 5 ₃ fm, enclosed by danger circle	30° 16'.1 S	153° 23'.8 E
	legend, <i>Obstns</i> , centred on	30° 18'.0 S	153° 21'.0 E
Delete	depth, 33fm	30° 18'.0 S	153° 17'.6 E
	depth, 55fm	30° 16'.4 S	153° 24'.5 E

Aus 812 [985/2009]

Insert	depth, 10m, enclosed by danger circle with legend, <i>Obstn</i>	30° 16'.50 S	153° 18'.00 E
	depth, 10m, enclosed by danger circle with legend, <i>Obstn</i>	30° 16'.07 S	153° 23'.80 E
Delete	depth, 80m	30° 16'.4 S	153° 18'.5 E
	depth, 95m	30° 16'.2 S	153° 23'.8 E

1046* AUSTRALIA - QUEENSLAND - Southport - Wave Break Island to Crab Island - Light beacons repositioned

Maritime Safety Queensland Notices 571/2009, 572/2009 (AA424854, AA424853)

Aus 230 [859/2009]

Insert	special light beacon, <i>Fl. Y. 4s</i> , with topmark	27° 56'.458 S	153° 25'.133 E
Move	light beacon	27° 54'.26 S	153° 25'.13 E
	to	27° 54'.276 S	153° 25'.137 E
Delete	light beacon	27° 56'.47 S	153° 25'.15 E
	light beacon	27° 56'.43 S	153° 25'.13 E

1047* AUSTRALIA - QUEENSLAND - Gladstone - Gatcombe Channel - Light buoy repositioned

Maritime Safety Queensland Notice 581/2009 (AA426650)

Aus 245 [987/2009]

Move	light buoy	23° 52'.95 S	151° 21'.97 E
	to	23° 52'.914 S	151° 21'.870 E

Aus 246 [357/2009]

Move	light buoy	23° 52'.95 S	151° 21'.97 E
	to	23° 52'.914 S	151° 21'.870 E

1048* AUSTRALIA - QUEENSLAND - Port Alma - Timandra Bank to Oswestry Rock - Depths

Maritime Safety Queensland (DHDB 1322477)

Aus 247 [988/2009]

Insert	drying height, <u>0₂m</u> , enclosed by contour	23° 30'.28 S	150° 57'.67 E
--------	--	--------------	---------------

Aus 265 [NC 27/3/2009]

Insert	depth, <u>4₄m</u> , and extend contour NW to enclose	23° 25'.832 S	150° 59'.312 E
	depth, <u>9₇m</u> , enclosed by contour	23° 27'.450 S	150° 58'.398 E
	drying height, <u>0₅m</u> , enclosed by contour	23° 30'.284 S	150° 57'.670 E
	drying height, <u>0₂m</u> , and extend LWL E to enclose	23° 30'.888 S	150° 56'.618 E
	depth, <u>2₅m</u>	23° 29'.727 S	150° 57'.710 E

Substitute	depth, <u>5₄m</u> , for depth, 5m	23° 32'.56 S	150° 55'.47 E
	depth, <u>9₁m</u> , for depth, 9 ₇ m	23° 32'.45 S	150° 55'.59 E

Delete	depth, 11 ₁ m	23° 27'.49 S	150° 58'.37 E
	depth, 6 ₉ m	23° 30'.89 S	150° 56'.65 E
	depth, 3 ₈ m	23° 29'.69 S	150° 57'.71 E

Aus 819 [988/2009]

Insert	drying height, <u>0₅m</u> , enclosed by contour	23° 30'.28 S	150° 57'.67 E
--------	--	--------------	---------------

Substitute	depth, <u>2₅m</u> , for depth, 2 ₉ m	23° 29'.7 S	150° 57'.7 E
------------	--	-------------	--------------

Delete	depth, 0 ₃ m	23° 30'.1 S	150° 57'.7 E
--------	-------------------------	-------------	--------------

1049 AUSTRALIA - CORAL SEA - Argo Bank - Depth

BA Notice 34/4337/2009 (AA424020)

Aus 4060 (INT 60) [1005/2009]

Insert	depth, <u>252m</u> , enclosed by contour	23° 24'.0 S	159° 50'.0 E
	contour enclosing depth, 286m	22° 10'.0 S	159° 05'.0 E

Aus 4602 (INT 602) [1005/2009]

Insert	depth, <u>252m</u> , and extend contour NE to enclose	23° 24'.0 S	159° 50'.0 E
--------	---	-------------	--------------

Delete	depth, 425m	23° 25'.0 S	159° 46'.0 E
--------	-------------	-------------	--------------

1050* PAPUA NEW GUINEA - Torlesse Islands - Pilot boarding place

National Maritime Safety Authority PNG, Australian Reef Pilots (AA427130, AA427129)

Aus 512 [1274/2008]

Insert	pilot boarding place	10° 48'.0 S	152° 07'.0 E
--------	----------------------	-------------	--------------

1051* AUSTRALIA - QUEENSLAND - Nassau River to Wellesley Islands - Chart note

Australian Hydrographic Service (AA427025, AA427026)

Aus 303 [150/2009]

Insert	accompanying note	17° 36'.0 S	139° 16'.0 E
--------	-------------------	-------------	--------------

1052 INDONESIA - Pulau Leti - Tanjung Tutpateh - Racon

BA Notice 34/4370/2009 (AA424019)

Aus 4721 (INT 721) [998/2009]

Insert	racon, with magenta legend <i>Racon (T)</i>	8° 13'.1 S	127° 36'.1 E
--------	---	------------	--------------

AX 4721F [998/2009]

Insert	racon, with magenta legend <i>Racon (T)</i>	8° 13'.1 S	127° 36'.1 E
--------	---	------------	--------------

1053* INDONESIA - Pulau Alor - Light

Australian Hydrographic Service (AA424914)

Aus 4722 (INT 722) [998/2009]*On certain copies only*

Amend	light range to 29M	8° 19'.0 S	125° 08'.0 E
-------	--------------------	------------	--------------

1054* AUSTRALIA - WESTERN AUSTRALIA - Port Walcott - Chart notes

Australian Hydrographic Service (AA425228)

Aus 55 [828/2009]*On certain copies only*

Substitute	accompanying note for P note	20° 33'.8 S	117° 01'.8 E
------------	------------------------------	-------------	--------------

Delete	note, TRAFFIC REGULATIONS	20° 31'.6 S	117° 02'.6 E
--------	---------------------------	-------------	--------------

1055* AUSTRALIA - WESTERN AUSTRALIA - Port Walcott - Anchorage; depth

UKHO (AA427151, AA427152)

Aus 56 [NE 17/7/2009]

Insert	depth, 9 ₆ m, enclosed by contour	20° 35'.369 S	117° 12'.973 E
--------	--	---------------	----------------

Delete	swinging circle arc, centred on	20° 33'.61 S	117° 13'.91 E
--------	---------------------------------	--------------	---------------

1056* AUSTRALIA - WESTERN AUSTRALIA - Geraldton - Bearing

UKHO (AA427123, AA427124)

Aus 81 [NE 17/7/2009]

Amend	legend to <i>Dir 071.4°</i>	28° 46'.09 S	114° 31'.96 E
-------	-----------------------------	--------------	---------------

	legend to <i>180.1° - Dir 000.1°</i>	28° 45'.86 S	114° 36'.06 E
--	--------------------------------------	--------------	---------------

1057* AUSTRALIA - WESTERN AUSTRALIA - Cape Leeuwin - Beacon

UKHO (AA426712)

Aus 757 [949/2009]

Delete	beacon	34° 22'.4 S	115° 08'.1 E
--------	--------	-------------	--------------

1058* AUSTRALIA - WESTERN AUSTRALIA - King George Sound - Wreck; pilot boarding place
UKHO (AA426714)

Aus 759 [NE 16/1/2009]

Insert	dangerous wreck	35° 04'.79 S	117° 58'.07 E
Move	pilot boarding place to	35° 03'.2 S 35° 03'.23 S	117° 58'.1 E 117° 58'.48 E
Delete	depth, 35m	35° 04'.6 S	117° 58'.1 E
	depth, 13 ₆ m	35° 03'.2 S	117° 58'.7 E

1059* AUSTRALIA - TASMANIA - Currie Harbour - Depths
3D Marine Mapping (DHDB 1290874)

Aus 178 (plan, Currie Harbour) [656/2009]

Insert	depth, 0 ₅ m, and extend contour NW to enclose	39° 55'.491 S	143° 50'.339 E
	depth, 0 ₂ m	39° 55'.570 S	143° 50'.458 E
Delete	drying area, centred on	39° 55'.53 S	143° 50'.47 E
	depth, 1m	39° 55'.49 S	143° 50'.35 E
	depth, 1 ₁ m	39° 55'.57 S	143° 50'.46 E

1060* AUSTRALIA - TASMANIA - Cloudy Bay - Nomenclature

Australian Hydrographic Service (AA418757), Tasmanian Map Centre (AA427190, AA427192, AA427193)

Aus 173 [831/2009]

Move	name, <i>Blue Devil Rock</i> , centred on	43° 26'.6 S	147° 13'.4 E
	to	43° 28'.06 S	147° 13'.79 E

1061* AUSTRALIA - TASMANIA - Marion Narrows - Beacon withdrawn

Former Notice - 1129(T)/2005 is cancelled

Marine and Safety Tasmania Notice M114/2009 (AA425275)

Aus 169 (plan, Blackman Bay) [203/2009]

Delete	beacon	42° 50'.84 S	147° 52'.86 E
--------	--------	--------------	---------------

Aus 171 [878/2009]

Delete	beacon	42° 50'.84 S	147° 52'.86 E
--------	--------	--------------	---------------

1062* AUSTRALIA - TASMANIA - Maria Island - Light buoy established

CSIRO (AA425372, AA425373, AA425376, AA425377, AA426645, AA426646)

Aus 766 [424/2009]

Insert	special cylindrical light buoy, <i>Fl. Y. 6s</i> , without topmark	42° 35'.94 S	148° 14'.00 E
--------	--	--------------	---------------

Aus 797 [767/2009]

Insert	special cylindrical light buoy, <i>Fl. Y. 6s</i> , without topmark	42° 35'.94 S	148° 14'.00 E
--------	--	--------------	---------------

1063* AUSTRALIA - TASMANIA - Devonport to Burnie - Precautionary area
UKHO (AA426466)

Aus 163 [881/2009]

On certain copies only

Delete	dashed line enclosing precautionary area symbol, centred on	41° 02'.8 S	145° 56'.0 E
--------	--	-------------	--------------

Aus 163 (plan, Port of Burnie) [881/2009]

On certain copies only

Delete	dashed line enclosing precautionary area symbol, centred on	41° 02'.8 S	145° 56'.0 E
--------	--	-------------	--------------

Aus 164 [880/2009]

On certain copies only

Delete	dashed line enclosing precautionary area symbol, centred on	41° 8'.7 S	146° 22'.1 E
--------	--	------------	--------------

1064* AUSTRALIA - VICTORIA - Port Phillip - Point Lonsdale - Light

Australian Hydrographic Service (AA424911)

Aus 143 [1004/2009]

On certain copies only

Amend	light to <i>LFI(2)WRG.15s 37m 12/10M</i>	38° 17'.5 S	144° 36'.8 E
-------	--	-------------	--------------

1065* AUSTRALIA - VICTORIA - Port Phillip - Anchorages

Former Notice - 1034(P)/2009 is cancelled

Port of Melbourne Corporation (AA419623, AA419624, AA420322, AA420323)

Aus 143 [1064/2009]

Insert	accompanying block	37° 58'.0 S	144° 52'.0 E
	magenta legend, <i>Gas</i> (see <i>Note</i>), centred on	37° 59'.0 S	144° 58'.7 E

Delete	legend, (see <i>Note</i>)	37° 58'.0 S	144° 57'.1 E
--------	----------------------------	-------------	--------------

Aus 157 [NC 27/3/2009]

Insert	accompanying block	38° 01'.3 S	144° 47'.0 E
--------	--------------------	-------------	--------------

1066* AUSTRALIA - VICTORIA - Corner Inlet - Stockyard Channel - Beacon

Australian Hydrographic Service (AA427264)

Aus 181 [885/2009]

On certain copies only

Move	beacon	38° 42'.24 S	146° 15'.70 E
	to	38° 43'.255 S	146° 15'.688 E

1067* AUSTRALIA - VICTORIA - Port Welshpool - Lewis Channel - Light buoy established*Former Notice - 983(T)/2009 is cancelled*

Gippsland Ports (AA425245, AA425246), Victorian Notice 118/2009 (AA425658)

Aus 182 (plan, Port Welshpool) [834/2009]

Substitute	starboard lateral spar light buoy, <i>Fl.G.3s No21</i> , without topmark for light beacon	38° 42'.35 S	146° 27'.17 E
------------	--	--------------	---------------

Aus182 (plan, Lewis Channel) [834/2009]

Substitute	starboard lateral spar light buoy, <i>Fl.G.3s</i> , without topmark for light beacon	38° 42'.35 S	146° 27'.17 E
------------	---	--------------	---------------

1068(T)/2009 AUSTRALIA - NEW SOUTH WALES - Jervis Bay - Scientific instrument recovered*Former Notice - 1006(T)/2009 is cancelled*

Australian Hydrographic Service (AA428061)

Cancel this notice on receipt.

Chart formerly affected – Aus 193 - Aus 807 - Aus 808 - AX 0808E - AX 60193 - AX 70193 - AU436150 - AU5XX193**1069(T)/2009 AUSTRALIA - NEW SOUTH WALES - Port Kembla - Depth information***Former Notice - 317(T)/2009 is cancelled*

Port Kembla Port Corporation Notice 11/2009 (AA428253)

Available depths as at 8 September 2009:

<i>Berth</i>	<i>Metres</i>	<i>Remarks</i>
* Inner Harbour	15.2	
North West Basin	11.7	
101	11.5	
102	16.0	
103	-	Under Construction
104	15.7	
105	15.7	
106	13.9	
107	12.3	
108	-	Future Development
109	12.2	
110	11.0	
111	15.6	
112	12.8	
113	11.0	
201	10.6	To 250m
201	10.0	To 280m
201	8.5	To 350m
202	10.6	
203	10.1	
204	5.6	
205	7.0	
206	11.2	

* Indicates revised entry.

Chart temporarily affected - Aus 194 - AU5XX194

1070(T)/2009 AUSTRALIA - NEW SOUTH WALES - Newcastle - Depth information

Former Notice - 716(T)/2009 is cancelled

Newcastle Port Corporation (AA427489)

Available depths as at 1 September 2009:

<i>Berth</i>	<i>Metres</i>
Western Basin 3	11.6
Western Basin 4	11.6
Eastern Basin 1	11.3
Eastern Basin 2 North of Ch 450	11.6
Eastern Basin 2 South of Ch 450	11.3
Dockyard 2 (Dredge)	3.9
Channel Berth (formerly Dockyard 4)	8.0
Dyke 1	12.8
Dyke 2	12.8
* Dyke 4	16.0
* Dyke 5	16.0
* Dyke 6	6.3
BHP Wharf 6 to Ch 1050	7.6
Kooragang 2	11.6
Kooragang 2 North Dolphin	11.0
Kooragang 2 South Dolphin	11.0
Kooragang 3	13.0
Kooragang 4	16.2
Kooragang 5	16.4
Kooragang 6	16.2
Kooragang Ship Receival KSR	8.0
Throsby 1	9.5
Carrington wharf	To be sounded as and when required
Tug berth 4	6.5
Elgo wharf	To be sounded as and when required
<i>Channels</i>	
Entrance Approach	17.4
Entrance Channel (18.0m)	16.6
Entrance Channel (17.4m)	17.1
Entrance Channel (16.8m)	16.3
Entrance Channel (16.2m)	16.1
Entrance Channel to Horseshoe	15.2
Horseshoe	15.0
Steelworks Channel to Swinging Basin	15.0
Swinging Basin	15.0
Swinging Basin to Mayfield 4	9.7
Basin Cutting	12.8
Basin Area to Eastern & Western Basin Berths	12.4
Basin Area to 1 Throsby	10.0
Stockton Crossing	3.6

* Indicates revised entry.

Chart temporarily affected - Aus 207 - Aus 208 - AU5XX208**1071(T)/2009 AUSTRALIA - QUEENSLAND - Moreton Bay - Cleveland Point - Obstructions**

Date - Until 25 September 2009

Maritime Safety Queensland Notice 585(T)/2009 (AA427498)

Obstructions exist in an area bound by an arc from Cleveland Point between positions 27° 30'.23 S 153° 17'.16 E and 27° 30'.69 S 153° 17'.74 E.

Mariners are advised to keep clear of this area.

Chart temporarily affected - Aus 236

1072(T)/2009 AUSTRALIA - QUEENSLAND - Moreton Bay - Bramble Bay - Wave power converter*Former Notice* - 839(T)/2009 is cancelled

Maritime Safety Queensland Notices 469(T)/2009, 595(T)/2009 (AA418337, AA428064)

The wave power converter anchored in position 27° 19'.05 S 153° 08'.00 E (WGS84 datum) is partially submerged and marked by a special light buoy.

Mariners are advised to navigate with caution in the area.

Chart temporarily affected - Aus 236 - Aus 237 - AU5237X8

1073(T)/2009 AUSTRALIA - QUEENSLAND - Port Alma - Drilling operations completed*Former Notice* - 1020(T)/2009 is cancelled

Maritime Safety Queensland Notice 550(T)/2009 (AA423975)

Cancel this notice on receipt.

Chart formerly affected - Aus 247 - Aus 265 - Aus 819 - AU424150

1074(T)/2009 AUSTRALIA - QUEENSLAND - Shoalwater Bay - Live firing completed*Former Notice* - 962(T)/2009 is cancelled

Maritime Safety Queensland Notice 532(T)/2009 (AA422266)

Cancel this notice on receipt.

Chart formerly affected - Aus 260 - Aus 367 - Aus 822 - AX 0260E - AX 0367E - AX 0822E - AX 60260 - AU423150

1075(T)/2009 AUSTRALIA - QUEENSLAND - Cairns - Dredging operations*Date* - Until 29 September 2009

Maritime Safety Queensland Notice 600(T)/2009 (AA428391)

The dredge *Brisbane* is conducting dredging operations in the Port of Cairns, predominantly in the entrance with some operations in the inner harbour.

Mariners are advised to navigate with caution in the area.

Chart temporarily affected - Aus 262 - Aus 263 - Aus 264 - Aus 830 - AX 6027S - AX 63262 - AU417145 - AU5262X4

1076(T)/2009 AUSTRALIA - QUEENSLAND - Cairns - Smiths Creek - Dredging operations completed*Former Notice* - 906(T)/2009 is cancelled

Maritime Safety Queensland Notice 508(T)/2009 (AA420295)

Cancel this notice on receipt.

Chart formerly affected - Aus 263 - Aus 264 - AU5262X4

1077(T)/2009 AUSTRALIA - QUEENSLAND - Cooktown - Light buoy repositioned; light beacon withdrawn

Maritime Safety Queensland Notice 599(T)/2009 (AA428249)

No2 port lateral light beacon (15° 27'.24 S 145° 15'.36 E) has been withdrawn; a port lateral light buoy, *Fl.R.2-5s*, exists in position 15° 27'.22 S 145° 15'.34 E.

Chart temporarily affected - Aus 270 - AU5270P6

1078(T)/2009 AUSTRALIA - NORTHERN TERRITORY - Darwin - Drilling operations

Date - Until 30 November 2009

INPEX (AA428403)

Two jack-up barges are conducting drilling operations between positions 12° 29'.16 S 130° 52'.10 E and 12° 30'.85 S 130° 55'.93 E. A 50m safety zone exists around the barges.

Mariners are advised to navigate with caution in the area.

Chart temporarily affected - Aus 26 - Aus 28 - Aus 722 - AX 72026 - AX 72722 - AU413130 - AU5XXX24

1079(T)/2009 AUSTRALIA - WESTERN AUSTRALIA - Broome - Electronic navigation aid trial

Date - Until 30 June 2010

Broome Port Authority Notice 16/2009 (AA427722, AA427723, AA427543, AA427544)

A trial of Synthetic and Virtual Aids to Navigation (AtoN) is currently being conducted within the Port of Broome. Nine AtoN have been formulated and are being transmitted by the Port of Broome AIS Base Station in accordance with the table below. Full details of the trial and requests for feedback are contained in Port of Broome local marine notice 16/2009. This local marine notice is on the Port of Broome website www.broomeport.com.

Broome Port Authority AIS Base Station located in position 18° 00'.16 S 122° 12'.55 E.

<i>MMSI</i>	<i>Type</i>	<i>Message</i>	<i>Position (WGS84 datum)</i>	<i>Remarks</i>
995031014	Synthetic	Escape Rocks buoy	17° 59'.70 S 122° 09'.51 E	Established over existing Escape Rocks buoy, but buoy is not fitted with Message 6 capability.
995036001	Virtual	Nab Rock marker	17° 59'.42 S 122° 10'.58 E	Established on dangerous contour seaward of Nab Rock.
995036002	Virtual	130 / 210 marker	18° 01'.22 S 122° 12'.48 E	Established in Roebuck Deep to indicate 130 entry heading aim point and 210 departure heading aim point.
995036003	Virtual	Entrance Point marker	18° 00'.68 S 122° 12'.50 E	Established on the fringing reef at Entrance Point.
995036004	Virtual	East Channel 010/190 marker	18° 00'.61 S 122° 13'.02 E	Established as an aim point for entry and departure when using the channel to the east of Channel Rock beacon.
995031015	Synthetic	Channel Rock beacon	18° 00'.59 S 122° 12'.94 E	Established over existing Channel Rock beacon, but beacon is not fitted with Message 6 capability.
995031016	Synthetic	East Cardinal buoy	18° 00'.43 S 122° 12'.92 E	Established over existing East Cardinal buoy, but buoy is not fitted with Message 6 capability.
995031017	Synthetic	Middle Ground buoy	18° 00'.37 S 122° 13'.26 E	Established over existing Middle Ground buoy, but buoy is not fitted with Message 6 capability.
995036005	Virtual	030 entry marker	18° 00'.01 S 122° 13'.22 E	Established as an aim point when transiting the channel west of Channel Rock beacon.

Chart temporarily affected - Aus 50 - Aus 51 - Aus 324 - AU418122

1080(T)/2009 AUSTRALIA - WESTERN AUSTRALIA - Port Hedland - Depth information

Former Notice - 104(T)/2009 is cancelled

Port Hedland Port Authority Notices 5/2009, 7/2009 (AA427575, AA427579)

Available depths as at 15 June 2009:

<i>Berth</i>	<i>Metres</i>
* PHPA berth 1	12.0
PHPA berth 2	11.2
PHPA berth 3	12.2
BHP Billiton Nelson Point berth A	18.0
BHP Billiton Nelson Point berth B	17.2
BHP Billiton Finucane Island berth C	17.9
BHP Billiton Finucane Island berth D	18.3
Anderson Point berth 1	19.1
* Anderson Point berth 2	19.6

* Indicates revised entry.

Chart temporarily affected - Aus 52 - Aus 54 - AU5XXX52

1081(T)/2009 AUSTRALIA - WESTERN AUSTRALIA - Dampier - Dredging operations

Dampier Port Authority Notice 25/2009 (AA428191)

The dredge *Queen of the Netherlands* and support vessels are conducting dredging operations in the area bounded by the following positions (WGS84 datum):

20° 32'.4 S 116° 42'.7 E
 20° 32'.4 S 116° 42'.9 E
 20° 33'.8 S 116° 43'.2 E
 20° 36'.3 S 116° 45'.5 E
 20° 36'.5 S 116° 45'.3 E
 20° 36'.3 S 116° 44'.8 E
 20° 33'.3 S 116° 42'.5 E.

All vessels involved in the operations will monitor VHF Ch 11 and Ch 16.

Mariners are advised to navigate with caution in the area.

Chart temporarily affected - Aus 57 - Aus 58 - Aus 59 - AU5XXX58

1082(T)/2009 AUSTRALIA - SOUTH AUSTRALIA - Whidbey Isles to Kangaroo Island - Scientific instruments

Former Notice - 334(T)/2009 is cancelled

Date - Until 30 April 2010

South Australian Research and Development Institute (AA390585, AA390586, AA427162)

Subsurface scientific instruments exist as follows:

<i>Position (WGS84 datum)</i>	<i>Removed</i>
34° 55'.68 S 135° 00'.60 E	Apr - Sep 09, Jan 10
35° 14'.21 S 136° 41'.68 E	Oct 09
35° 16'.14 S 135° 41'.22 E	Apr - Sep 09
35° 30'.00 S 136° 36'.00 E	Apr 09 - Jan 10
36° 30'.96 S 136° 14'.58 E	Apr - Jun 09, Oct - Nov 09
36° 31'.20 S 136° 51'.30 E	

Chart temporarily affected - Aus 342 - Aus 343 - Aus 345 - Aus 346 - Aus 444 - AX 0343E - AU336135

1083(T)/2009 AUSTRALIA - TASMANIA - Macquarie Harbour - Scientific instruments*Date* - Until 19 October 2009

Marine and Safety Tasmania Notice M117/2009 (AA428132)

Scientific instruments marked by special buoys exist in positions 42° 21'.54 S 145° 24'.20 E and 42° 22'.07 S 145° 23'.83 E.

Mariners are advised to navigate with caution in the area.

Chart temporarily affected - Aus 177 - Aus 792

1084(T)/2009 AUSTRALIA - TASMANIA - Missionary Bay to Norfolk Bay - Spat collection removed; light buoys recovered*Former Notices* - 905(T)/2004, 906(T)/2004 are cancelled

Department of Primary Industries, Parks, Water and Environment (AA428141)

Cancel this notice on receipt.

Chart formerly affected - Aus 171 - Aus 173

1085(T)/2009 AUSTRALIA - TASMANIA - River Tamar - Port Dalrymple - Reclamation works*Former Notice* - 1055(T)/2008 is cancelled*Date* - Until 10 March 2010

Marine and Safety Tasmania Notice M116/2009 (AA425265)

Reclamation works are in progress between positions 41° 08'.30 S 146° 50'.35 E and 41° 08'.20 S 146° 50'.00 E .

A silt curtain marked by three special light buoys, *Fl.Y.5s*, exists in the area.

Mariners are advised to navigate with caution in the area.

Chart temporarily affected - Aus 167 - Aus 799 - AU442146 - AU5167X8

1086(T)/2009 AUSTRALIA - TASMANIA - Bell Bay - Long Reach - Light beacon destroyed*Former Notice* - 220(T)/2008 is cancelled*Date* - Until 26 March 2010

Marine and Safety Tasmania Notice M115/2009 (AA425266)

No 2 light beacon K3588 (41° 09'.62 S 146° 54'.96 S) has been destroyed; a port lateral light buoy, *Fl.R.3s*, exists in situ.

Chart temporarily affected - Aus 167 - Aus 168 - AU5167X8

1087(P)/2009 AUSTRALIA - VICTORIA - Barwon Head - Scuttling*Date* - On or about 12 September 2009

Scientific Management Associates (AA426705, AA426706)

HMAS *Canberra* will be scuttled in position 38° 17'.93 S 144° 32'.61 E (WGS84 datum) on Saturday 12 September 2009.

Least depth over the wreck will be *5m*.

Special pillar light buoys, *Q.Y.*, will be established in positions 38° 17'.98 S 144° 32'.61 E and 38° 17'.88 S 144° 32'.61 E.

During the scuttling a 1km exclusion zone exists from position 38° 17'.93 S 144° 32'.61 E.

Chart which will be affected - Aus 143 - Aus 144 - Aus 349 - Aus 788 - AU439144

1088(T)/2009 AUSTRALIA - VICTORIA - Port Phillip - Altona - Dredging operations completed

Former Notice - 980(T)/2009 is cancelled
Victorian Notice 111(T)/2009 (AA423295)

Cancel this notice on receipt.

Chart formerly affected - Aus 155 - AU5155P1**1089(T)/2009 AUSTRALIA - VICTORIA - Port Phillip - Williamstown - Harbour works**

Date - Until 30 September 2009
Victorian Notice 121(T)/2009 (AA427815)

Harbour works are in progress at the Royal Yacht Club (37° 51'.54 S 144° 54'.55 E).

A barge and associated vessels are onsite and will display the appropriate lights and shapes.

Mariners are advised to navigate with caution in the area.

Chart temporarily affected - Aus 154 - Aus 155 - AU438144 - AU5XX154**1090(T)/2009 AUSTRALIA - VICTORIA - Port Phillip - St Kilda - Dredging operations**

Date - Until 15 October 2009
Victorian Notice 122(T)/2009 (AA427816)

Dredging operations are in progress at the entrance to the marina (37° 52'.35 S 144° 58'.41 E).

Mariners are advised to navigate with caution in the area.

Chart temporarily affected - Aus 143 - Aus 155 - AU438144

HYDROGRAPHIC REPORTS

<i>Locality</i>	<i>Report</i>	<i>Ship/Authority</i>	<i>Observer</i>
NSW- Port Kembla	Light	<i>MV Iron Monarch</i>	D Kemp
TAS- Cloudy Bay	Nomenclature	Tasmanian Map Centre	

NAVIGATION WARNINGS

The following radio messages have been received during the period to 11 September 2009. Signal copies of these messages may be destroyed. It is recommended that the reprint of Navigational Warnings should be kept in a file or a book divided into areas. Cancellation should be made on receipt of signals and reprints.

Rigs on location other than those listed in the latest Section III summary are the subject of Radio Navigational Warnings. Rigs in transit will not be the subject of Warnings.

AUSCOAST WARNING

197 Cancelled.
 198 Cancelled.
 199 Cancelled.
 200 Cancelled.
 201 Cancelled.
 202 Cancelled.
 203 Cancelled.
 204 Cancelled.
 205 Cancelled.
 206 Drill rig *Ocean Patriot* in position 40° 28'.54 S 145° 52'.25 E. 2.5M clearance requested.
 207 Drill rig *Stena Clyde* in position 21° 20'.04 S 114° 04'.58 E. 2.5M clearance requested.
 208 Cancelled.
 209 Cancelled.
 210 Cancelled.
 211 Uncharted shoal located in position 10° 48'.86 S 141° 53'.04 E. Depth 4.3m.
 212 Special purpose vessel *Geo Atlantic* conducting seismic survey towing 4M cable in area 21° 37'.00 S to 28° 00'.00 S and 111° 57'.00 E to 114° 51'.00 E. 5M clearance requested.
 213 Drill rig *Songa Venus* in position 10° 49'.02 S 126° 09'.21 E. 2.5M clearance requested.

NAVAREA X WARNINGS

Nil.

Navigational warnings in force as at 110001UTC SEP 09.**Auscoast**

102 128 134 155 161 166 170 188 191 194 196 206 207 211 212 213

Navarea X

Nil.

Summary of mobile drilling rigs as at 110001UTC SEP 09.

<i>Name</i>	<i>Position</i>
Songa Venus	10° 49'.02 S 126° 09'.21 E
Transocean Legend	13° 24'.73 S 122° 08'.78 E
Atwood Eagle	19° 54'.48 S 115° 07'.55 E
Ensco 7500	20° 12'.90 S 114° 32'.20 E
Jack Bates	20° 03'.85 S 113° 35'.98 E
Stena Clyde	21° 20'.04 S 114° 04'.58 E
Ocean Epoch	21° 31'.44 S 114° 06'.44 E
Nan Hai 6	21° 29'.20 S 113° 58'.70 E
Ocean Patriot	40° 28'.54 S 145° 52'.25 E

NAVAREA XIV WARNINGS

Nil.

Navarea XIV warnings in force as at 110001UTC SEP 09.

Nil.

To accompany Australian Notice to Mariners 1051/2009

OMISSIONS FROM CHART

Certain information has been omitted from this chart. For details see the larger scale nautical charts and relevant nautical publications.

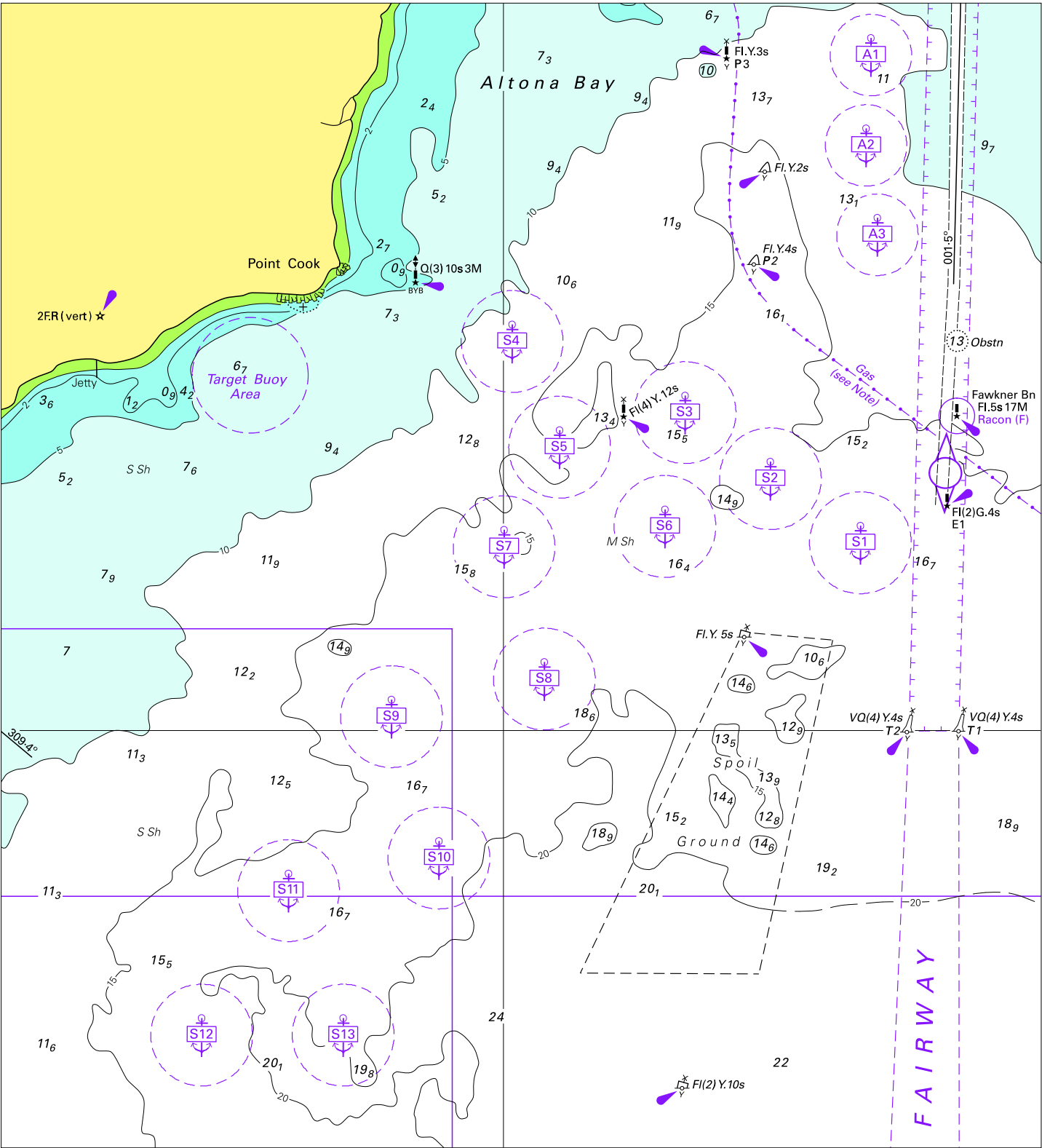
Note for chart Aus 303.

To accompany Australian Notice to Mariners 1054/2009

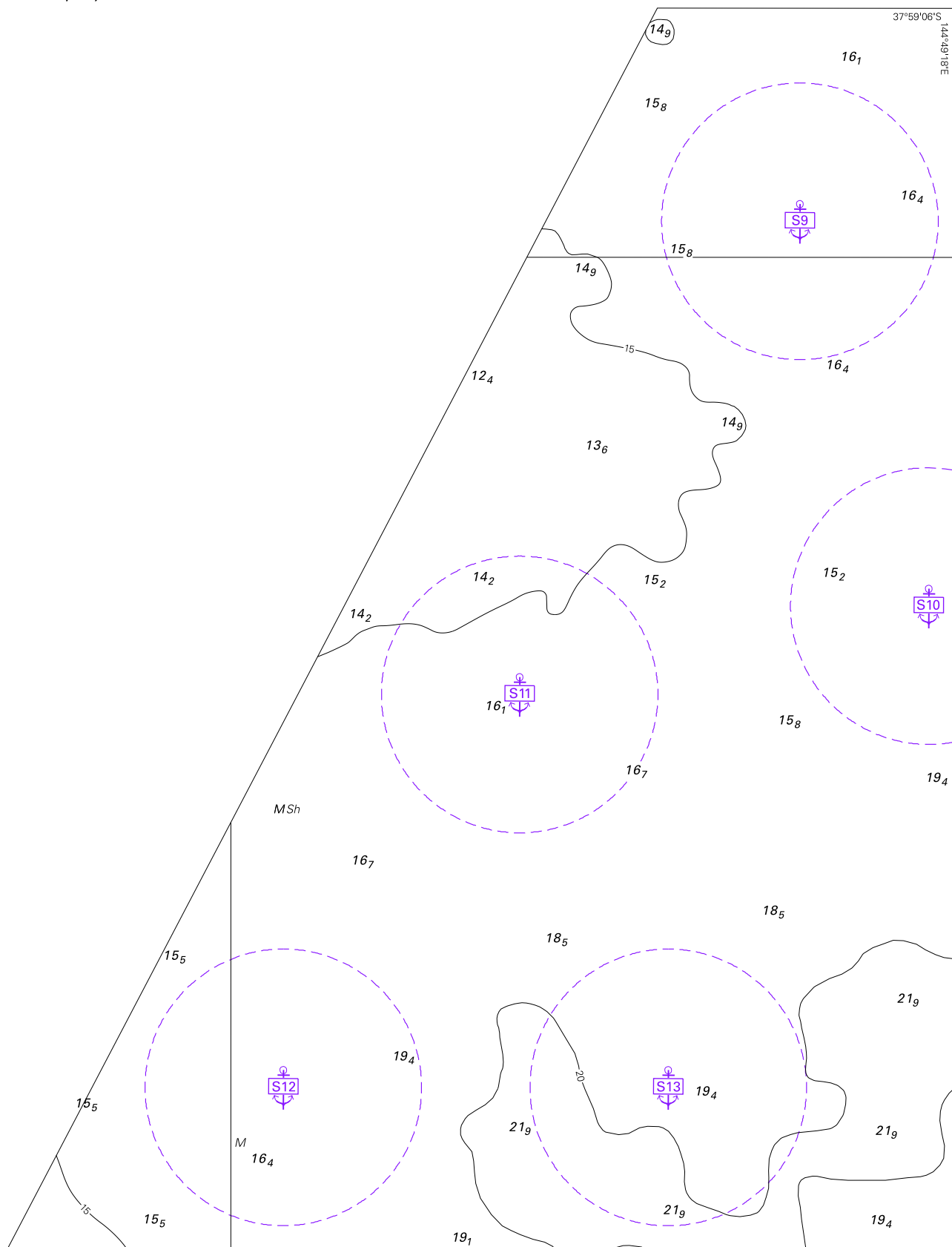
PILOTAGE

Entry into Port Walcott is via the 194°/256° tracks to 20° 32'.1 S 117° 17'.7 E; from this position to the berth pilotage is compulsory. The buoyed channel is for departure only and pilotage is compulsory to the port limit and for deep draught vessels needing to transit the Outer North Channel. Inbound vessels should not impede outbound vessels constrained by their draught or restricted in their ability to manoeuvre. All vessels maintain listening watch VHF Ch 14 and 16.

Note for chart Aus 55.



To accompany Australian Notice to Mariners 1065/2009



Block for chart Aus 157

© Commonwealth of Australia 2009

(168-6 x 221-2mm)

AMENDMENTS TO ADMIRALTY LIST OF LIGHTS AND FOG SIGNALS

Vol K Edition 2009/10. Weekly Edition No. 36, Dated 03 September 2009.
Last Amendment: Weekly Edition No. 35, dated 27 August 2009.

K1024-1	Karang Pandan (I)	2 53-17 S 107 12-17 E	Fl(2)W 10s	13	12	Black ♂ on black beacon, red bands	fl 0-8, ec 1-2, fl 0-8, ec 7-2. Ra refl. Isolated danger mark
*	*	*	*	*	*	*	*
K1639-22	- FPSO Puffin	12 17-50 S 124 19-60 E	Lit		Off station, riser mooring buoy in situ (T) 2009
							*
K1787-33	- Bunbury Harbour. The Cut. Groyne. No 1	33 18-23 S 115 40-19 E	Fl Y 2s				
*	*	*	*	*	*	*	*
K1787-34	- Bunbury Harbour. The Cut. Groyne. No 2	33 18-17 S 115 40-22 E	Fl Y 2s				
*	*	*	*	*	*	*	*
K1811-4	- No 2	33 51-98 S 121 54-45 E	Q R	7	5	Red □ on beacon	Destroyed; Fl Y 2s light buoy in situ (T) 2009
							*
K2523-7	- Lewis Channel. S side. No 21	38 42-35 S 146 27-17 E	Fl G 3s	Green △ on green beacon	Destroyed; Isolated danger buoy Fl(2)W 5s in situ (T) 2009
							*
K2786-05	- Bar Ldg Lts 245°25'. Middle	31 38-25 S 152 50-01 E	2 Q Y (hor)				
*	*	*	*	*	*	*	*
K2786-8	Remove from list. Replaced by light buoy						
K2787	Remove from list. Replaced by light buoy						
K2850-2	- Lts in line 290-9°. Front. Porpoise Point. GS1	27 55-97 S 153 25-86 E	Fl G 4-3s	..	5		
	*	*	*		*		
K2850-21	- Lts in line 290-9°. Rear. 1-45M from front. Broadwater Tower	27 55-45 S 153 24-32 E	Oc W 5s	105	8	On building	
	-----	..	By day F W				
		*			*	*	
K2850-34	- Sand By-Pass Jetty. SJ1	27 56-31 S 153 25-95 E	Fl Bu 2-5s		Mark N limit of measured mile
		*	*			*	
K2850-354	- North Channel	27 55-70 S 153 25-02 E	Fl R 4-3s	□ on red beacon	
*	*	*	*	*	*	*	*
K2850-358	- North Channel	27 55-33 S 153 24-86 E	Fl R 4-3s	□ on red beacon	
*	*	*	*	*	*	*	*
K2850-369	- Carters Bank	27 55-35 S 153 24-51 E	Fl Y 2-5s	× on yellow beacon	
	*	*	*				
K2850-375	Remove from list						
K2850-405	- The Broad Water	27 56-19 S 153 24-54 E	Fl R 3s	□ on red beacon	
		*	*				
K2850-408	- The Broad Water	27 56-18 S 153 24-58 E	Fl G 3s	△ on green beacon	
		*	*				
K2850-42	- The Broad Water	27 57-39 S 153 24-87 E	Fl R 3s	□ on red beacon	
		*	*			*	
K2850-452	- Ray Newlyn Channel	27 57-28 S 153 25-16 E	Fl G 3s	△ on green beacon	
*	*	*	*	*	*	*	*
K2850-49	- South Channel	27 56-43 S 153 25-13 E	Fl G 1-5s	△ on green beacon	
*	*	*	*	*	*	*	*
K2850-6	- South Channel	27 56-47 S 153 25-15 E	Fl Y 3s	× on yellow beacon	
		*	*				

Annex

K2850-645	- Baths	27 58-04 S 153 25-17 E	Fl Y 5s	× on yellow beacon	
*	*	*	*	*	*	*	*
K2851-369	- Runaway Bay, Crab Island, E	27 54-26 S 153 25-13 E	Fl R 2-5s	□ on red beacon	
*	*	*	*	*	*	*	*
K2851-67	- Runaway Bay	27 54-84 S 153 24-62 E	Fl Y 3s	× on yellow beacon	
		*	*			*	
K2851-7	Remove from list - Duplicate of K2850.367						
K2851-71	- Bayview Harbour, South Breakwater, Head	27 55-37 S 153 24-46 E	Q R	Red □ on red beacon	
	*	*	*			*	
K3301-66	- North Channel, Lts in line 299-8°, Front	12 39-81 S 141 51-03 E	F Bu	23	Occas
----		..	By day F W	Occas
			*				
K3301-661	- North Channel, Lts in line 299-8°, Rear	12 39-74 S 141 50-90 E	F Bu	26	Occas
----		..	By day F W	Occas
			*				
K3336	Torasi River	9 07-58 S 141 00-92 E	Fl W 3s	14	10	Framework tower	fl 0-4. PA
*	*	*	*	*	*	*	*

AMENDMENTS TO
ADMIRALTY LIST OF RADIO SIGNALS

Weekly Edition No. 36 dated 3 September 2009

The **Admiralty List of Radio Signals diagrams** included in the paper version of the weekly Notice to Mariners (Section VI) are printed in black and white. If required, a colour version of these diagrams can be downloaded from the UKHO website. To obtain a colour version of these diagrams go to: www.ukho.gov.uk – select **PRODUCTS AND SERVICES** – select **Maritime Safety Info** – select **Visit NMs page and Download NMs** – select **Weekly** – select **Year** – select **Week** – go to **Selected Week Content** – select **File** (for example: NP286(1)-WK23-09-PAGE211_Week23_2009.pdf)

VOLUME 1, PART 2, NP 281(2), 2009/10

Published Wk 29/09
(Last Amendments: Weekly Edition No. 34 dated 20 August 2009)

MARITIME RADIO STATIONS

PAGE 129, COOK ISLANDS (NZ), RAROTONGA (E5R), contacts table, row 3.
Delete row and replace by:

	E-MAIL: Rarotonga Radio: radiohf@telecom.co.ck ngatama@telecom.co.ck RCC: polstaff@police.co.ck
--	--

[Telecom Cook Islands Ltd \(HH080/022/11 – E36\) 36/09](#)

PAGE 129, COOK ISLANDS (NZ), RAROTONGA (E5R), RT (HF) table, row 3.
Delete H24:

[Telecom Cook Islands Ltd \(HH080/022/11 – E36\) 36/09](#)

VOLUME 2, NP 282, 2009/10

Published Wk 10/09
(Last Amendments: Weekly Edition No. 35 dated 27 August 2009)

RADAR BEACONS**PAGE 44, NORWAY.**

Insert:

Salhusfjorden Bridge Racon¹ 60°31'·23N 5°16'·44E **65090**
(3 & 10 cm) 360° 16-22 n miles **K** (0-375 n miles)
(1) ITOFAR

Statens Kartverk Sjø (HH080/006/11 - E19) 36/09

PAGE 46, NORWAY.

Insert:

Sandnessundet Bridge Racon¹ 69°41'·50N 18°54'·23E **66260**
(3 & 10 cm) 360° 18-24 n miles **T** (0-375 n miles)
(1) ITOFAR

Statens Kartverk Sjø (HH080/006/11 - E19) 36/09

PAGE 92, CHINA.

Insert:

Dongying Gang Lt Buoy No 2 Racon 38°10'·03N 119°06'·39E **82114**
O

Chinese Notice 31/1131/09 (RSDRA2009000109337) 36/09

LEGAL TIME**PAGE 218, Argentina, Zone 2, Territory column.**

Delete legend San Luis

OAG Worldwide Ltd (HH080/030/11 - E25) 36/09

PAGE 218, Argentina, after Zone 2.

Insert:

Zone 3	Province of San Luis	+04	+03	Second Sun in Oct 0000h	Second Sat in April 2400h
--------	----------------------	-----	-----	-------------------------	---------------------------

OAG Worldwide Ltd (HH080/030/11 - E25) 36/09

VOLUME 5, NP 285, 2009/10

Published Wk 23/09
(Last Amendments: Weekly Edition No. 32 dated 6 August 2009)

CHAPTER 16: DISTRESS, SEARCH AND RESCUE:**PAGE 351, POLAND, Contacts table, row 1, SPOC POLSKA (Cospar-Sarsat SPOC).**

Delete and replace by:

SPOC POLSKA (Cospas-Sarsat SPOC)	22 5745542 22 5745543 22 8460733	22 5745539	AFTN EPWWZDZX & EPWWYGYC
-------------------------------------	--	------------	-------------------------------------

Polish Air Navigation Services Agency (PANSA) (HH080/004/15 - E30) 36/09

PAGE 352, POLYNÉSIE FRANÇAISE (France), RCC TAHITI, row 1, column 2.

Delete 420901

MRCC Papeete (HH080/022/11 - E37) 36/09

PAGE 356, SAINT LUCIA, National SAR Agency table.

Delete and replace by:

National SAR Agency: Royal Saint Lucia Police Force Address: Marine Police Unit, P.O. Box 109, Castries, Saint Lucia Tel: +1 758 456 3870 Fax: +1 758 45 22261

Marine Police, Saint Lucia (HH080/025/11 - E1) 36/09

PAGE 361, SYRIA, National SAR Agency table,

Delete and replace by:

National SAR Agency: General Directorate of Ports Address: P.O. Box 505, Lattakia, Syria Tel: +963 41 472593 & 41 471416 Fax: +963 475 805

Syrian General Directorate of Ports (HH080/011/08 - E34) 36/09

Nil.

AMENDMENTS TO ADMIRALTY LIST OF LIGHTS AND FOG SIGNALS

Vol K Edition 2009/10. Weekly Edition No. 37, Dated 10 September 2009.
Last Amendment: Weekly Edition No. 36, dated 03 September 2009.
K1052-9 Remove from list. Replaced by light buoy

K1095-5 Remove from list

K2548 Remove from list

K2549 Remove from list

K3769 Remove from list

K4256-7	- Shelly Beach	41 16-91 S 174 00-71 E	Fl R 3s	5	5	White metal post	fl 0-3	
			*	*				*
K4710	- Naikorokoro	17 39-23 S 177 22-59 E	Fl(2)W 6s	13	10	White structure on black piles 15		*
K4968-14	- Baie de Cook (Paopao). Ldg Lts 191°. Rear. 178m from front (F)	17 30-11 S 149 49-41 W	Iso W 4s	9	3	White pylon, red bands 10	Sync with front	*
		*						*

AMENDMENTS TO
ADMIRALTY LIST OF RADIO SIGNALS

Weekly Edition No. 37 dated 10 September 2009

The **Admiralty List of Radio Signals diagrams** included in the paper version of the weekly Notice to Mariners (Section VI) are printed in black and white. If required, a colour version of these diagrams can be downloaded from the UKHO website. To obtain a colour version of these diagrams go to: www.ukho.gov.uk - select **PRODUCTS AND SERVICES** - select **Maritime Safety Info** - select **Visit NMs page and Download NMs** - select **Weekly** - select **Year** - select **Week** - go to **Selected Week Content** - select **File** (for example: NP286(1)-WK23-09-PAGE211_Week23_2009.pdf)

VOLUME 2, NP 282, 2009/10

Published Wk 10/09
(Last Amendments: Weekly Edition No. 36 dated 3 September 2009)

RADAR BEACONS

PAGE 34, FINLAND.
59540 Armbågen Lt.
Delete entry

[Finnish Notice 21/379/09 \(RSDRA2009000104316\) 37/09](#)

PAGE 71, INDIA.
79031 New Mangalore Fairway Lt Buoy.
Delete entry

[Maritime Safety Services, India \(RSDRA2009000112675\) 37/09](#)

DIFFERENTIAL GPS (DGPS)

PAGE 189, KOREA, SOUTH, before Eocheong Do Lt entry.
Insert:

Chuncheon	37°59'·67N 127°42'·90E	286		757 758	676	43		Operational	
-----------	---------------------------	-----	--	---------	-----	----	--	-------------	--

[Korean Notice 32/493/09 \(RSDRA2009000112388\) & Korean Lights List 32/09 \(RSDRA2009000112400\) 37/09](#)

PAGE 207, diagram 9, RADIOBEACONS TRANSMITTING DGPS.
Insert • Chuncheon in position 37°59'·67N 127°42'·90E

[Korean Notice 32/493/09 \(RSDRA2009000112388\) & Korean Lights List 32/09 \(RSDRA2009000112400\) 37/09](#)

VOLUME 5, NP 285, 2009/10

Published Wk 23/09

(Last Amendments: Weekly Edition No. 36 dated 3 September 2009)

CHAPTER 9: VHF DSC, LIST OF COAST STATIONS FOR SEA AREA A1**PAGES 115 and 116, IRAN.**

Delete section and replace by:

Iran

Bandar-e Shahid Rajaei (Bandar Abbas)	004225304	27°06'N 56°04'E	30	Operational (<i>RCC Bandar Abbas</i>)
Ābādān	004225313	30°20'N 48°17'E	30	Operational
Amīrābād (Caspian Sea)	004225310	36°51'N 48°17'E	30	Operational
Anzālī (Caspian Sea)	004225305	37°28'N 49°27'E	30	Operational
Asaloyeh	004225316	27°28'N 52°36'E	30	Operational
Būshehr	004225302	28°59'N 50°49'E	30	Operational
Chābahār	004225301	25°18'N 60°35'E	30	Operational
Deyyer	004225327	27°50'N 51°55'E	30	Operational
Deylam	004225318	30°34'N 50°09'E	30	Operational
Ganāveh	004225317	29°34'N 50°34'E	30	Operational
Jāsk	004225322	25°39'N 57°46'E	30	Operational
Khārg	004225306	29°14'N 50°20'E	30	Operational
Khorramshahr	004225309	30°20'N 48°23'E	30	Operational
Lavar-e Saheli	004225319	28°15'N 51°15'E	30	Operational
Lengeh	004225307	26°32'N 54°54'E	30	Operational
Neka (Caspian Sea)	004225311	36°50'N 53°14'E	30	Operational
Now-Shahr (Caspian Sea)	004225303	36°39'N 51°30'E	30	Operational
Qeshm	004225315	26°57'N 56°17'E	30	Operational

(former amendment 30/09)
Ports and Shipping Organization (PSO), Iran (HH080/016/10 - E32) 37/09**CHAPTER 10: MF DSC, LIST OF COAST STATIONS FOR SEA AREA A2****PAGE 140, IRAN.**

Delete section and replace by:

Iran

Bandar-e Shahid Rajaei (Bandar Abbas)	004225304	27°07'N 56°04'E	250	Operational (<i>RCC Bandar Abbas</i>)
Amīrābād (Caspian Sea)	004225310	36°51'N 48°17'E	250	Operational
Anzālī (Caspian Sea)	004225305	37°28'N 49°27'E	250	Operational

(former amendment 30/09)
Ports and Shipping Organization (PSO), Iran (HH080/016/10 - E32) 37/09**PAGE 157, diagram R6-A, MEDITERRANEAN - EAST AND BLACK SEA (Including CASPIAN SEA), Digital Selective Calling (DSC), Limits of Sea Areas.**

Insert new station • Amīrābād 004225310 in position 36°51'N 48°17'E

Insert new A2 area:

The area is limited by a circular radius of 250 n miles centred on Amīrābād in position 36°51'N 48°17'E

(former amendment 30/09)
Ports and Shipping Organization (PSO), Iran (HH080/016/10 - E32) 37/09

CHAPTER 11: HF DSC, LIST OF COAST STATIONS FOR SEA AREAS A3 AND A4

PAGE 177, DENMARK.

Delete country entry wef 1 October 2009

Danish Maritime Authority (HH080/003/19 - E33) 37/09

PAGE 178, IRAN.

Delete section and replace by:

Iran

Bandar-e Shahid Rajaei (Bandar Abbas)	004225304	4,6,8,12 & 16 MHz	Operational (<i>RCC Bandar Abbas</i>)
Amīrābād (Caspian Sea)	004225310	4,6,8,12 & 16 MHz	Operational
Anzalī (Caspian Sea)	004225305	4,6,8,12 & 16 MHz	Operational

(former amendment 30/09)

Ports and Shipping Organization (PSO), Iran (HH080/016/10 - E32) 37/09

PAGE 181, Figure 13 - Operational HF DSC Stations with MMSI numbers for Sea Areas A3 and A4.

Insert in approximate position 37°28'N 49°27'E:

- Anzalī 004225305

Insert in approximate position 36°51'N 48°17'E:

- Amīrābād 004225310

(former amendment 30/09)

Ports and Shipping Organization (PSO), Iran (HH080/016/10 - E32) 37/09

PAGE 181, Figure 13 - Operational HF DSC Stations with MMSI numbers for Sea Areas A3 and A4.

Delete Lyngby 002191000 in approximate position 56°22'N 10°44'E wef 1 October 2009

Danish Maritime Authority (HH080/003/19 - E33) 37/09

CHAPTER 16: DISTRESS, SEARCH AND RESCUE

PAGE 322, DENMARK, row 4, column 1, LYNGBY RADIO.

Insert under LYNGBY RADIO:

VHF and MF DSC only.

Danish Maritime Authority (HH080/003/19 - E33) 37/09

PAGE 363, TUNISIA, National SAR Agency table and notes.

Delete and replace by:

National SAR Agency: SERVICE NATIONAL DE SURVEILLANCE CÔTIÈRE

Address: Base navale de La Goulette, 2080 La Goulette, Tunisie

Tel: +216 71 736300 & 736360

Fax: +216 71 736180

The Tunisian Navy are responsible for co-ordinating Search and Rescue operations. A network of Coast Radio Stations maintains a continuous listening watch on international distress frequencies. Preferred inter RCC languages are English, French and Arabic.

Ministère de la Défense Nationale, Tunisie (HH080/011/08 - E35) 37/09

PAGE 363, TUNISIA, Contacts table, after row 1, TUNIS ACC.

Insert:

MRCC TUNIS	71 560240 71 560244	71 561804	
------------	------------------------	-----------	--

Ministère de la Défense Nationale, Tunisie (HH080/011/08 - E35) 37/09

VOLUME 6, PART 4, NP 286(4), 2009/10

Published Wk 30/09

(Last Amendments: Weekly Edition No. 35 dated 27 August 2009)

**PAGE 274, SOLOMON ISLANDS, SOLOMON ISLANDS - SHIP
REPORTING SYSTEM, Ship Reporting System.**

Delete section and replace by:

Ship Reporting System

DESCRIPTION:

To assist in search and rescue operations in the waters of the Solomon Islands a reporting service exists. The service is controlled by the MRCC centre located at Honiara.

PROCEDURE:

- (1) Honiara CRS (H4H) calls vessels within Solomon Island territorial waters for position reports daily at 0900 LT (2200 UTC) and 1500 LT (0400 UTC).
(2) For frequency details see ALRS Volume 1(2).

MRCC Honiara, (RSDRA2009000108278), 37/09

AMENDMENTS TO ADMIRALTY SAILING DIRECTIONS

NP 15 Australia Pilot Volume III (2009 Edition)

**Queensland - Approaches to Moreton Bay —
Directions**

142

After Paragraph 4.23 4 Insert:

**North West Bypass Channel
4.23a**

- 1 North West Bypass Channel is the direct route between NW4 Light Beacon (26°51'·5S 153°09'·3E) and NW12 Light Beacon (27°02'·3S 153°15'·5E). The channel has a least charted depth of 9·2 m and is used by shallow-draught vessels as an alternative to North West Channel.

Australian Notice 934/2009
(AA 419711 - AA 419713)

[37/09]